



Here is the Caravel the day we bought it.

JUN 13 2007





AIRSTREAM  
500A

JUN 13 2007

50





JUN 13 2007



It's missing the front couch (or gaucho as Airstream calls it)  
The toilet isn't installed, its just stored there.











The lower half of the bathroom fiberglass pan is missing. The closet walls are laying on the floor.





The previous owners' quick fix for a missing vent cover: spray foam and cool-seal paint.





More spray foam and a jar lid seal off the plumbing vent stacks?







New aluminum Airstream vent cap on the roof!





Interior and walls removed to begin plywood sub-floor replacement.



The whole sub-floor was rotten around the periphery. The previous owner's bootleg refrigerator wiring.





More 40+ year-old rotten sub-floor



Rear floor out, frame cleaned, primed and painted.





Repair to a hacked out piece of wall frame.  
We won't be using this old heater and vent hole.



The image shows the interior of a small, possibly temporary, living space. A large, light-colored, rectangular floor segment is newly installed in the center of the room. The walls are white and show signs of wear, including dark smudges and peeling material. A window is covered with patterned curtains featuring a blue and green floral design. To the right, a wooden ladder is leaning against the wall. In the foreground, a green lantern sits on a wooden floor. The overall scene suggests a recent renovation or setup in a confined area.

The new floor segment installed

Lonnie does some frame welding.










New middle floor segment

A wooden workbench is positioned in a garage, leaning against a white door. The workbench has three white panels attached to its top surface, which are being refurbished. The workbench is made of light-colored wood. In the background, there is a white door with a window and a yellow hose hanging on the wall. To the right of the workbench, there are various tools and materials, including a white bucket, a blue jug, and a wooden crate. The floor is concrete.

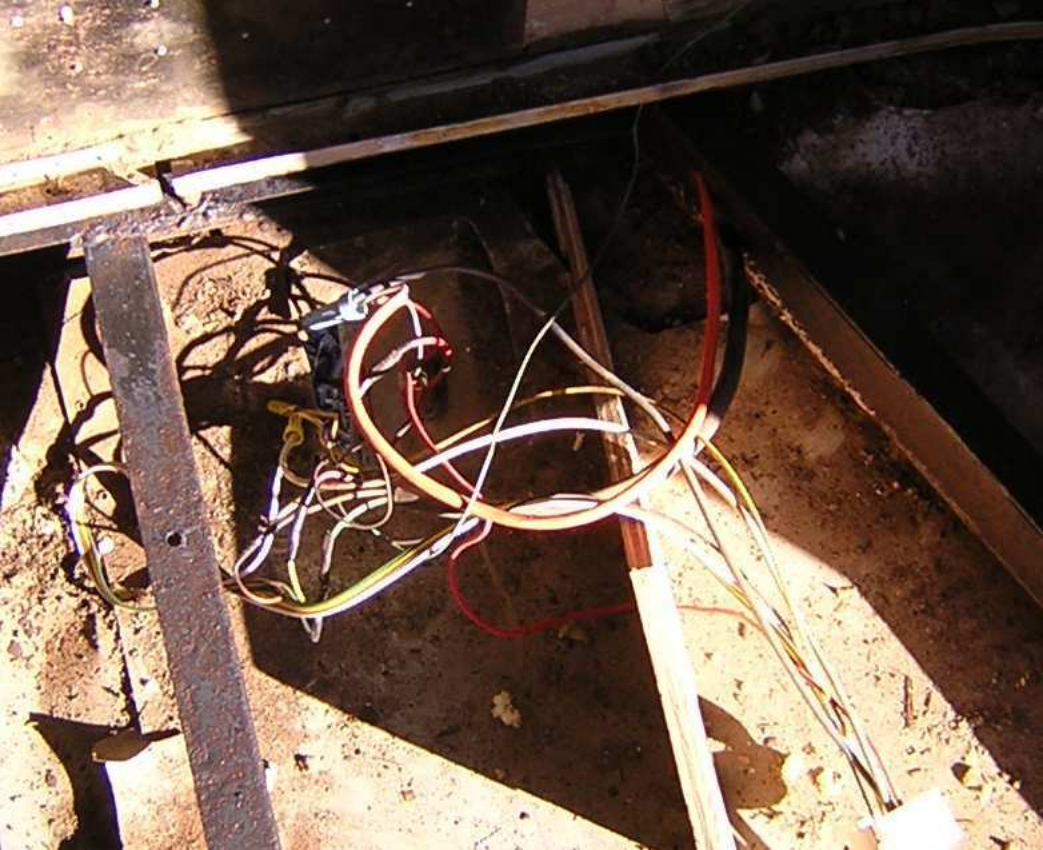
All the interior parts get refurbished








Front segment out.  
New 12 volt wiring going in.







Reinstalling and painting the walls.  
New electrical box and circuits.

The image shows the interior of a vehicle, possibly a van or camper, with a curved wall and ceiling. A window is visible on the right side, showing a view of trees and grass outside. The wall is covered in a textured, brownish material, possibly insulation or a specific type of paneling. A yellow text box is overlaid on the lower-left portion of the image. In the bottom right corner, there is a cluttered area with various tools and wires, including a blue electrical outlet and a white cable. The overall appearance is that of a workspace or a renovation site.

Better wiring solution  
for the refrigerator.











Lock for the rock guard







16449

AIRSTREAM



New Marmoleum floor covering.  
Reinstalling the interior



















New access panel for the slide-out air conditioner.







First camping trip tests A/C and electrical.







Rebuilt counter with drawers instead of stove. Building new front gauchó.































We opted for a Porta-potty instead of RV toilet. It is strapped to the wall for travel. This Toilet is vented to the plumbing stack to reduce odors.

We left the original Zolatone paint in the bathroom.









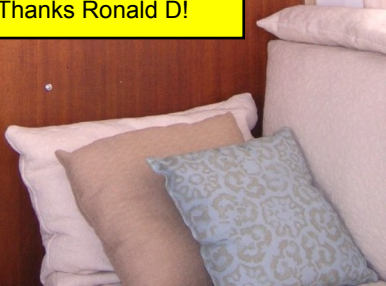


The  
Silver  
Lining

INSIGNIA  
15.5"  
LCD TV  
W/PCB OF



Vintage Cone lights  
Thanks Ronald D!





AIRSTREAM

1148

Polishing



16449

AIRSTREAM









A curtain covers the plumbing, water heater, and air conditioner.



INSTALLATION INSTRUCTIONS  
VENTING CLASS.  
TYPE CP-USE

**CAUTION**

DO NOT ATTEMPT TO REPAIR OR SERVICER THIS UNIT. CONTACT A QUALIFIED SERVICE TECHNICIAN FOR ALL REPAIRS AND MAINTENANCE.

DO NOT ATTEMPT TO REPAIR OR SERVICER THIS UNIT. CONTACT A QUALIFIED SERVICE TECHNICIAN FOR ALL REPAIRS AND MAINTENANCE.









New aluminum vent lid







Lets go camping!



























